



Technical Stage Ride

Date 23.10.2023

Technical and schematic stage rider
including a manual and circuit diagram of the stage rack

Table of contents		Page
1.	Diagram	3
2.	Stage technical	4 - 7
	Stage	4
	Midi / Click	4
	Vocals (Jenny)	5
	Backing Vocals	5
	Bass guitar (Chris)	5
	Guitar 1 (Dennis)	6
	Guitar 2 (Flo)	6
	Drumset (Raphael)	7
3.	Stage design	4
	Backdrop, Sidedrop, Riser etc.	
4.	Stage Rack - Manual	8 - 17
	Circuit Diagram	9
	Labeling of the cabling	11
	Scope of delivery	12
	InEar-Monitoring	14
	Soundcraft UI24r	15
	Amplifier	16
5.	Contact	17
6.	Alternative devices for integration if needed	18
	Professional Audio support	



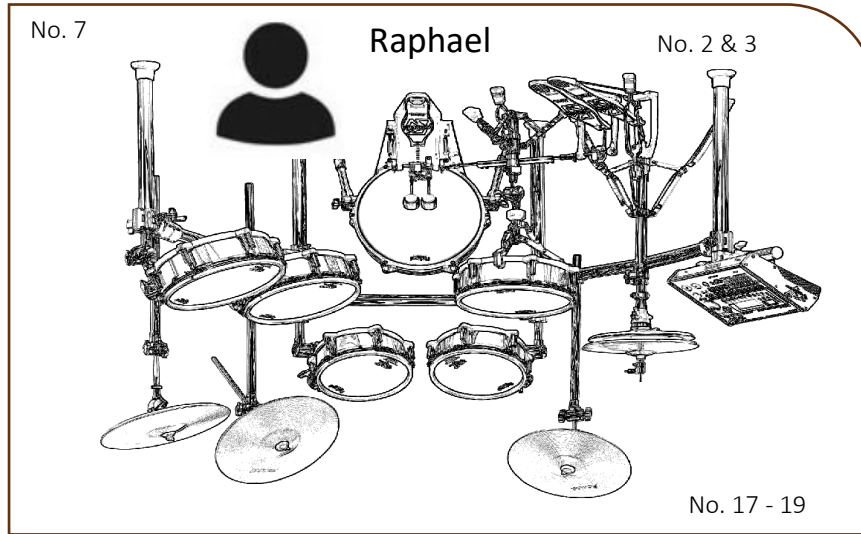
All rights reserved! Copyright Fireborn GbR

No. 14
Git 1 Cabinet

No. 11
Bass Cabinet

Sidedrop No. 5

No. 16

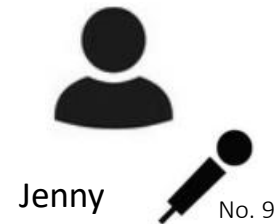
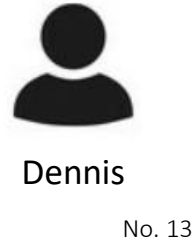
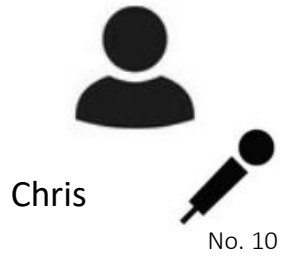


2m

No. 1
StageRack

No. 15
Git 2 Cabinet

Sidedrop No. 5



No. 6
Monitor

No. 6
Monitor

Riser No. 8

No. 6
Monitor

No. 6
Monitor

Stage		Equipment supplied by the band	No.	Requirements supplied by venue
1.	In Ear - Monitoring	Stage Rack (for true bypass and „in ear“ Monitoring) Including: Soundcraft UI24r, 5x InEar-Devices, 3x Splitter, Powersupply <i>- More details are shown in the manual</i>	1	Schuko- Voltage 230 V / 16Amp. (single fuse)
2.	Monitoring - Jenny	if required (2x) Fame 150 SM - 200 Watt / 4 Ohm	6	(4x) Stage monitor speakers <i>[Mixed by FOH]</i>
3.	Professional Audio (PA)			<i>Front of House (Mixing & Mastering)</i>
4.	Multicore Audio IN	sssnake MC8, sssnake MC6 <i>(Switch to Stage Rack)</i>		Drum-Microphonetechnic and cabeling (XLR)
5.				

Midi / Click		Equipment supplied by the band	No.	Requirements supplied by venue
1.	Musical Instrument Digital Interface	Tablet – Link to Stage-Rack (alternative Alesis Sample Pad Pro + 2 x male jack cable mono 6.3mm)	2	Schuko- Voltage 230 V / 16Amp. (single fuse)
2.	Smartphone-Click	Click – Link to Stage Rack (Smartphone with 2 x female jack cable connector stereo 6.3mm pawl to XLR. Smartphone is used for playing the clicktrack. Clicktrack must only be audible on the drummer's in-ear monitor.)	3	Schuko- Voltage 230 V / 16Amp. (single fuse)

Stage Design		Equipment supplied by the band	No.	Requirements supplied by venue
1.	Backdrop (Logo)	8m x 6m fabric flag <i>[fire protection standard B1]</i>	4	Mounting
2.	Sidedrop	(2x) 2m x 2m (incl. Mounting) <i>[fire protection standard B1]</i>	5	
3.	Riser (Vocals)		8	<i>if possible ~ 2m x 0,80m (central-front)</i>
4.	Drumriser		7	<i>if possible ~ 3m x 2m</i>

Jenny (Vocals)		Equipment supplied by the band	No.	Requirements supplied by venue
1.	Microphon	Sennheiser e945	9	1 x female XLR connector Wireless System or – Cable length > 10 m
2.	Monitoring		6	(4x) Stage monitor speakers <i>[Mixed by FOH]</i> <i>- also integrated into the technical stage table above!</i>

Chris (Backing Voc. / Bassguitar)		Equipment supplied by the band	No.	Requirements supplied by venue
1.	Microphon (Backing Voc)	SM 58	10	1 x female XLR connector - Cable length > 10 m - Microphone stand
2.	Monitoring	inEar-Monitoring – Stage Rack	1	
Bass				
3.	Guitars	(2x) ESP LTD B204 M (alternative: Schechter Diamond Stiletto Extreme 4BCH)		
4.	Head / Amplifier	Mark Bass [Little Mark Vintage O2] (alternative: Behringer Ultrabass 4500 or Gallien Krueger Fusion 550)	11	Schuko- Voltage 230 V / 16Amp. (single fuse) Post-Amp DI OUT XLR Cable (female XLR connector)
5.	Cabinet	if required 4x8" Neodym Mark Bass [Model New York] 1x12" Neodym Mark Bass [Model New York] (alternative: 8x10" Neodym Warwick WC811 or 2x10" Warwick WCA208)	11	Cabinet 4-8 x10" (Speakon connector)
6.	Accessoires	Pedalboard (incl. Power Supply 230V Transformator) - KORG Pitchblack Tuner - Boss Bass Compressor BC-1X - Hartke Bass Attacke 2	16	Schuko- Voltage 230 V / 16Amp. (single fuse) if required Pre-Amp DI OUT XLR Cable (female XLR connector)
		Wireless Instrument System Sennheiser EW 100 G4	11	

Dennis (Guitar 1)		Equipment supplied by the band	No.	Requirements supplied by venue
1.	Monitoring	inEar-Monitoring – Stage Rack	1	
2.	Guitars	- Epiphone Les Paul Custom Zakk Wylde PLUS - Bullseye Antique Ivory - Schecter Hellraiser C-1 FR - Burny Les Paul Custom		
	Acoustic Guitar	Takamine P1JC		
3.	Head / Amplifier	Neural DSP Quad Cortex (Alternative: ENGL Powerball 2 E645/2)	13	Schuko- Voltage 230 V / 16Amp. (single fuse)
4.	Cabinet	if required ENGL Cabinet 4X12 E412	14	Cabinet 1-4 x12" + Microphone (XLR) Schuko- Voltage 230 V / 16Amp. (single fuse)
5.	Accessoires	- Zakk Wylde Signature Wah Cry Baby (Sometimes) - ENGL Custom Footswitch Z-5 - Behringer Promatic Tuner TU300	13	
		Wireless Instrument System Sennheiser EW 100 G4		

Flo (Guitar 2)		Equipment supplied by the band	No.	Requirements supplied by venue
1.	Monitoring	inEar-Monitoring – Stage Rack	1	
2.	Guitars	ESP LTD EC-256		
3.	Head / Amplifier	Modeler Floorboard Line 6 Helix LT	12	Schuko- Voltage 230 V / 16Amp. (single fuse) 1 x male jack cable 6.3mm stereo
4.	Cabinet		15	Cabinet 1-4 x12" + Microphone (XLR) Schuko- Voltage 230 V / 16Amp. (single fuse)
		Wireless Instrument System Sennheiser EW 100 G4	11	

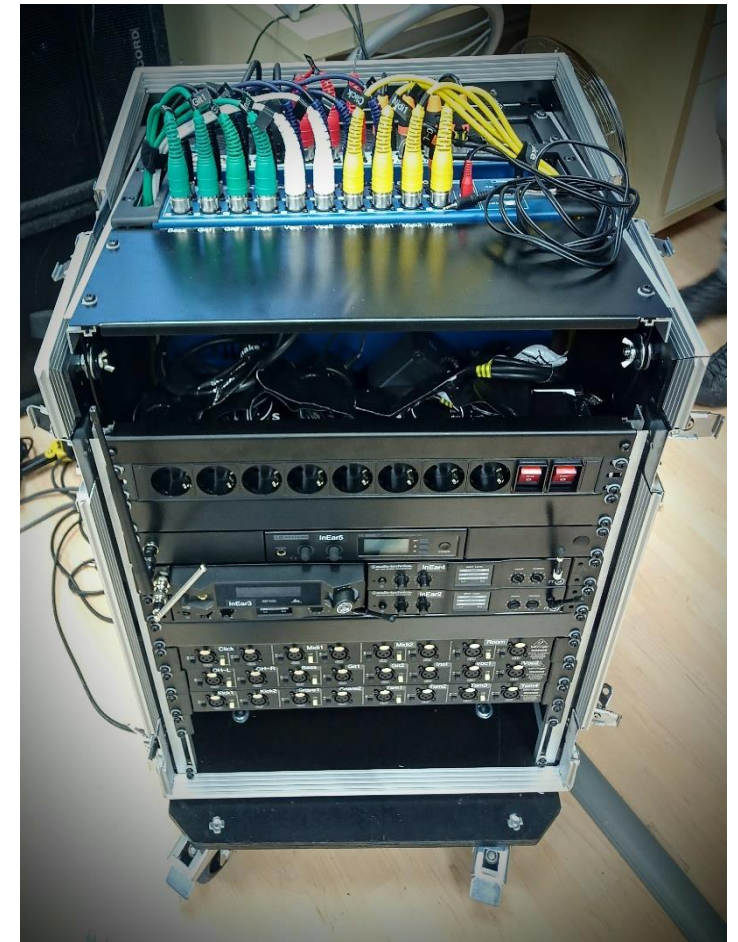
Raphael (Drums)		Equipment supplied by the band	No.	Requirements supplied by venue
1.	Cymbals	Meinl 14" MCS Medium Hi-Hat	17	Overhead Microphone (2x) & Cabeling XLR
		Meinl 16" Classics Custom Med. Crash		
		Meinl 17" Classics Custom Med. Crash		
		Meinl 18" Classics Custom Med. Crash		
		Meinl 20" MCS Medium Ride	17	
		Meinl 8 1/2" M-Series Bell		
		Paiste 16" China		
		Meinl 20" MB20 China		
2.	Drumset:	24 x 18" Bassdrum	18	Bassdrum Microphone & Cabeling XLR (if possible 2x – front and inside)
		14 x 6,5" Snare Drum		Snare drum Microphone & Cabeling XLR (if possible 2x - above and below)
		10 x 8" Tom Tom		Tom Microphone & Cabeling XLR
		12 x 9" Tom Tom		Tom Microphone & Cabeling XLR
		14 x 10" Tom Tom		Tom Microphone & Cabeling XLR
		16 x 16" Floor Tom		Tom Microphone & Cabeling XLR
3.	Hardware	Gibraltar Curved Drum-Rack	19	
		Tama HH75WN Hi-Hat		
		Tama HS70WN Snare Stand		
		Tama HT530C Drum Throne		
		Tama HP910LSW Speed Cobra Double		
4.	Monitoring	inEar-Monitoring – Stage Rack	1	



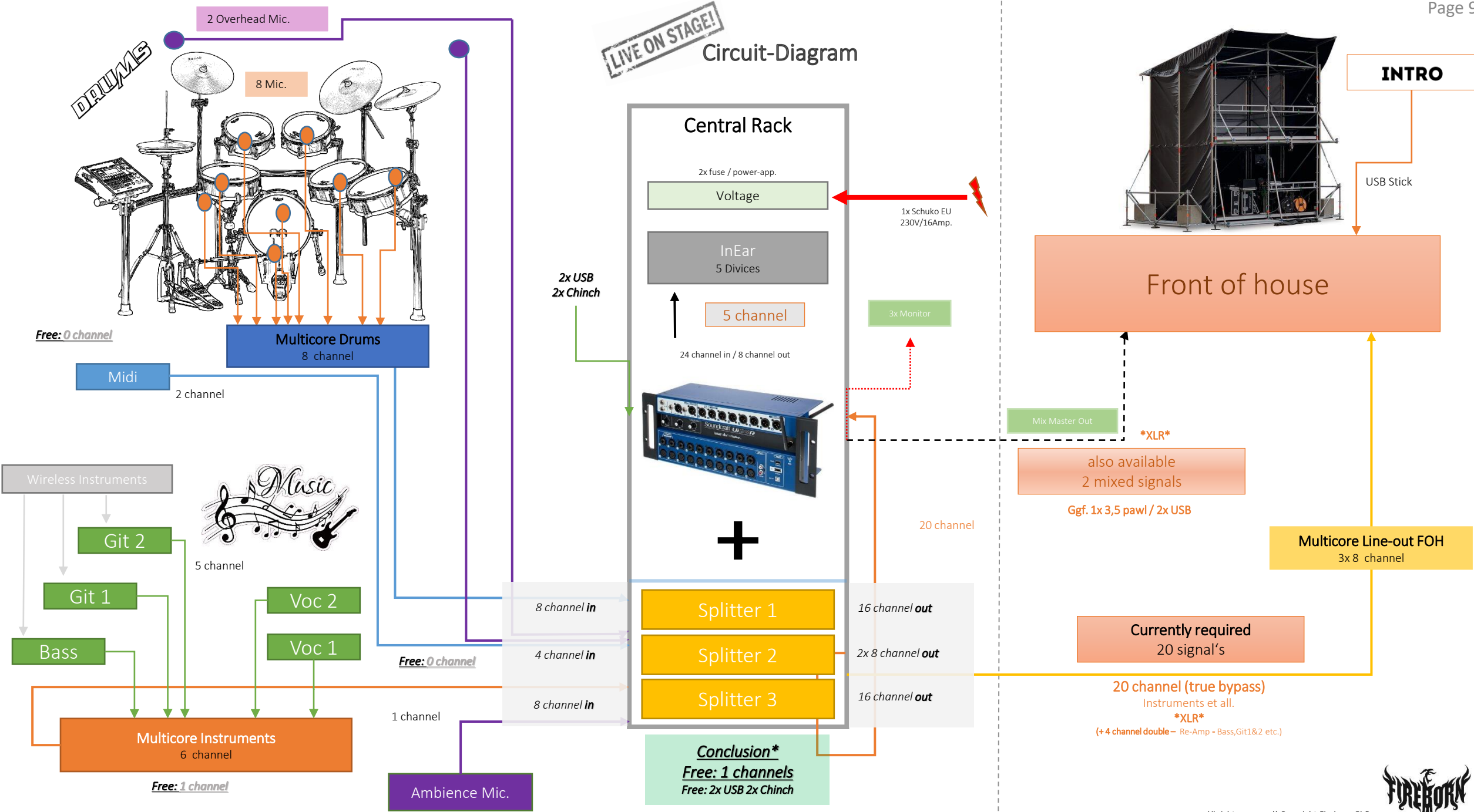


Stage Rack - Manual

Date 23.10.2023



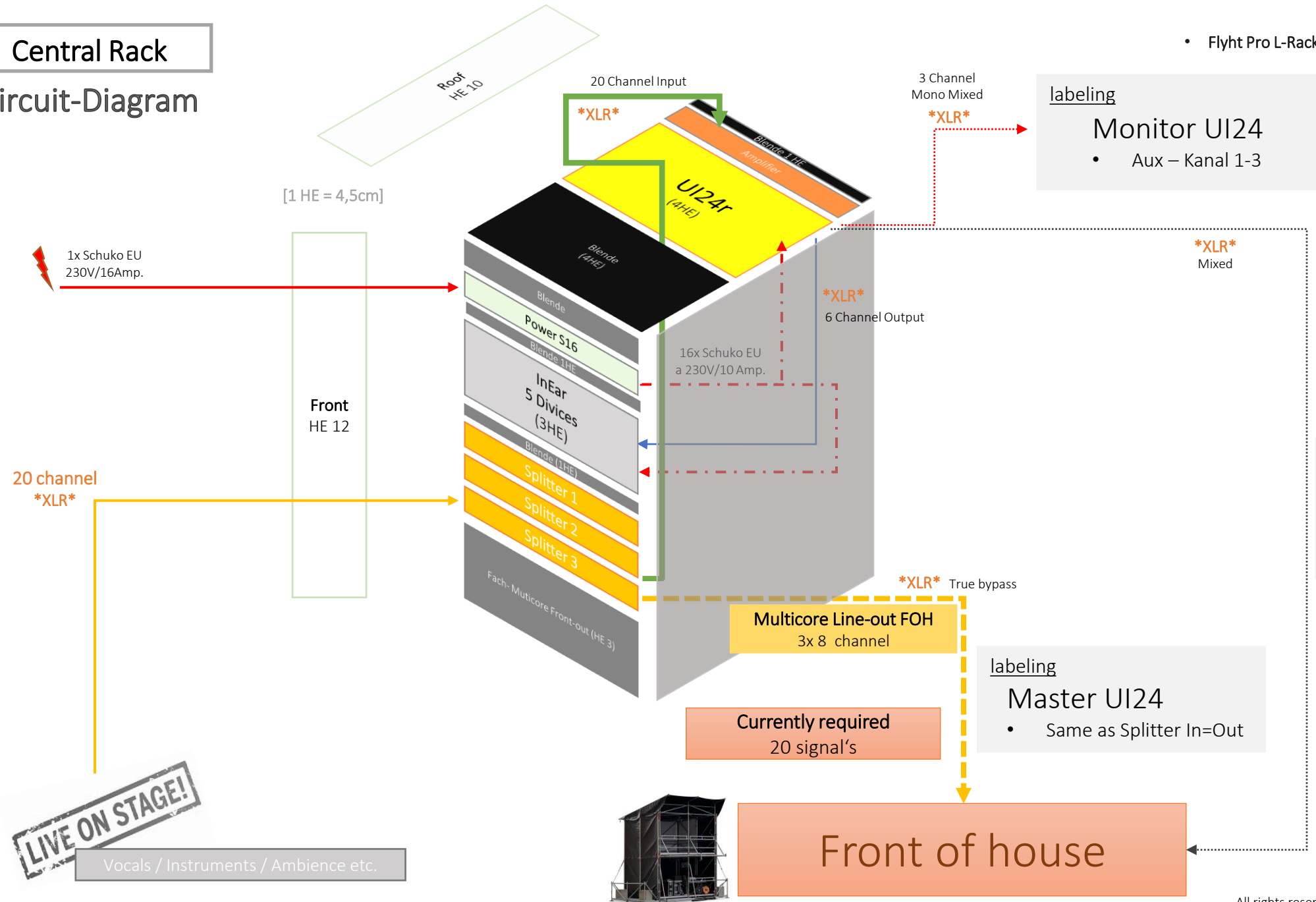
LIVE ON STAGE! Circuit-Diagram



Central Rack

Circuit-Diagram

[1 HE = 4,5cm]



Labeling of the cabling

	Label [abbreviation]	Splitter [No./Ch.]	Link to UI24 (IN) [Channel]	Link to UI24 (Aux) [Channel]	Cable type	Cable color	Cable length [cm]	(IN) „Multicore“ Cable type or socket	Label [No./Ch.] + „abbreviatio“	Length [cm]	(OUT) „Multicore“ Cable type or socket	Label [No./Ch.] + „abbreviatio“	Length [cm]	Other Connection /device	Front of house (FOH)
Device															
Bass drum (Front) – Kick out	Kick1	1/1	1	-	XLR	Black	150	MC8	1/1	1000	SXX8050	1/1	500	-	necessary
Bass drum (Inside) – Kick in	Kick2	1/2	2	-	XLR	Black	150	MC8	1/2	1000	SXX8050	1/2	500	-	optional / possible
Snare drum (overhead)	Snare1	1/3	3	-	XLR	Black	150	MC8	1/3	1000	SXX8050	1/3	500	-	necessary
Snare drum (floor)	Snare	1/4	4	-	XLR	Black	150	MC8	1/4	1000	SXX8050	1/4	500	-	optional / possible
Hanging tom (small)	Tom1	1/5	5	-	XLR	Blue	150	MC8	1/5	1000	SXX8050	1/5	500	-	necessary
Hanging tom (middle)	Tom2	1/6	6	-	XLR	Blue	150	MC8	1/6	1000	SXX8050	1/6	500	-	necessary
Standing tom (middle)	Tom3	1/7	7	-	XLR	Blue	150	MC8	1/7	1000	SXX8050	1/7	500	-	necessary
Standing tom (large)	Tom4	1/8	8	-	XLR	Blue	150	MC8	1/8	1000	SXX8050	1/8	500	-	necessary
Overhead Microphon Drumset (left)	OV-L	2/1	9	-	XLR	Grey	100	XLR	-	-	SXX8050	2/1	500	-	necessary
Overhead Microphon Drumset (right)	OV-R	2/2	10	-	XLR	Grey	100	XLR	-	-	SXX8050	2/2	500	-	necessary
Bass Guitar (Chris)	Bass	2/3	11	-	XLR	Green	150	MC6	1/1	1000	SXX8050	2/3	500	-	necessary
Lead guitar (Dennis)	Git1	2/4	12	-	XLR	Green	150	MC6	1/2	1000	SXX8050	2/4	500	-	necessary
Rhythm guitar (Flo)	Git2	2/5	13	-	XLR	Green	150	MC6	1/3	1000	SXX8050	2/5	500	-	necessary
Instrumental (Akkustik Guitar / Violine)	Inst	2/6	14	-	XLR	Green	150	MC6	1/4	1000	SXX8050	2/6	500	-	optional / possible
Vocals (Jenny)	Voc1	2/7	15	-	XLR	White	150	MC6	1/5	1000	SXX8050	2/7	500	-	necessary
Backing Vocals	Voc2	2/8	16	-	XLR	White	150	MC6	1/5	1000	SXX8050	2/8	500	-	necessary
Metronome digital	Klick	3/1-2	17	-	XLR	Yellow	150	3,5 pawl to XLR	-	-	SXX8050	3/1-2	500	-	optional / possible
Musical Instrument Digital Interface (left)	Midi1	3/3-4	18	-	XLR	Yellow	150	3,5 pawl to Adapter Y-XLR	-	-	SXX8050	3/3-4	500	-	necessary
Musical Instrument Digital Interface (right)	Midi2	3/5-6	19	-	XLR	Yellow	150		-	-	SXX8050	3/5-6	500	-	necessary
Room Mikrophon (tBone SC 140)	Room	3/7-8	20	-	XLR	Yellow	150	XLR	-	-	SXX8050	3/7-8	500	-	optional / possible
Audio / Aux IN / Mp3-Player	Mp3	-	Chinch L+R	-	3,5 pawl to chinch	Black	150	-	-	-	(MasterOUT or Monitor 1-3)				optional / possible
Mono Aux Out 1 / Monitor 1	Monitor1	-	-	1	XLR	Red	150	-	-	-	XLR red	Monitor1	150	(Fame SM 150)	optional / possible
Mono Aux Out 2 / Monitor 2	Monitor2	-	-	2	XLR	Red	150	-	-	-	XLR red	Monitor2	150	(Fame SM 150)	optional / possible
Mono Aux Out 3 / Monitor 3	Monitor3	-	-	3	XLR	Red	150	-	-	-	XLR red	Monitor3	150	-	optional / possible
In Ear Monitoring (Raphe)	InEar1	-	-	4	XLR	Black	100	-	-	-	-	-	-	AT M2T stereo	-
In Ear Monitoring (Jenny)	InEar2	-	-	5	XLR	Black	100	-	-	-	-	-	-	AT M2T stereo	-
In Ear Monitoring (Dennis)	InEar3	-	-	6	XLR	Black	100	-	-	-	6,3 pawl socket	-	-	KG IVM SST-450	optional / possible
In Ear Monitoring (Flo)	InEar4	-	-	7	XLR	Black	100	-	-	-	-	-	-	AT M2T stereo	-
In Ear Monitoring (Chris)	InEar5	-	-	8	Y-XLR	Black	50	-	-	-	6,3 pawl socket	-	-	LD MEI 1000 G2	optional / possible
Master Mix Out Stereo (left)	MasterOUT left	-	-	Master Left	XLR	Black	1000	-	-	-	XLR black or Speakom socket	MasterOUT left	1000	Crown XLS202 Amplifier	optional / possible
Master Mix Out Stereo (right)	MasterOUT right	-	-	Master Right	XLR	Black	1000	-	-	-	XLR black or Speakom socket	MasterOUT right	1000	Crown XLS202 Amplifier	optional / possible

- the sssnake MC8 8x Multicore



- length: 10 m
- metal-stage-box
- stagebox with 8 XLR-connector femal
- string with 8 XLR-connector male

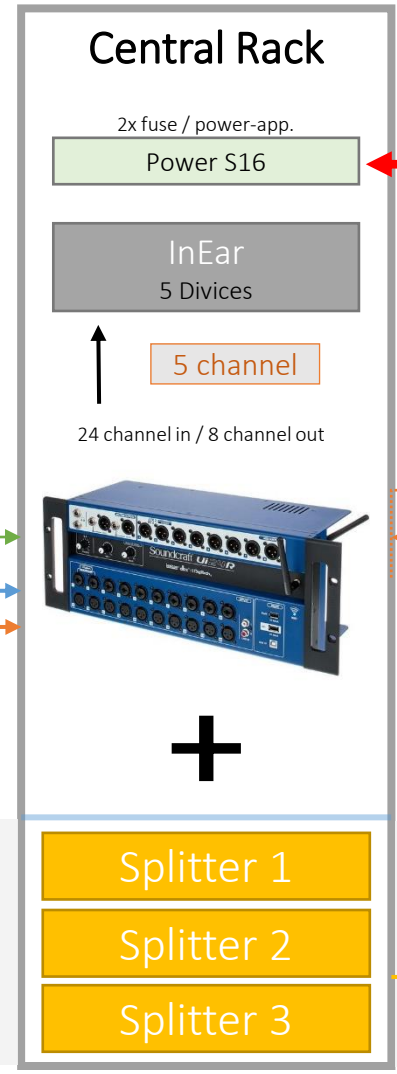
Multicore Drums
8 channel
XLR

Multicore Instruments
6 channel
XLR

- the sssnake MC6 6x Multicore



- length: 10 m
- metal-stage-box
- stagebox with 6 XLR-connector femal
- string with 6 XLR-connector male



2x USB
2x Chinch

1x Schuko EU
230V/16Amp.

3x Monitor

24 channel

24x XLR PATCH

- the sssnake XLR Patchcable 1,5



- length: 1,5 m
- XLR male <- -> XLR female

XLR



- the sssnake SXX8050 Snake Multicore

- 8x XLR connector- female wired on Splitter to XLR connector male (to FOH)
- length: 5 m



for example



Multicore Line-out FOH
3x 8 channel



Ambience Mic.

labeling
 Room UI24
 • Input – channel 20

XLR

- the t.bone SC 140 Stereoset Bundle
 - matched pair condenser-microphone the t.bone SC140
 - perfekt overhead use for Drum, Audience an acoustic instruments
 - frequenzy 20-20000 Hz
 - neseccary phantom power 48V neseccary
 - mit Low-Cut (-3 dB @ 75 Hz o. 150Hz) and Pad-Switch (-10 dB o. -20dB)
 - sensitivity: -38 dBV (12,6mV/Pa)
 - max. SPL: 130 dB
 - incl. spiderhold, 2x Stand and case
- XLR Y-connector also cabling lenght 10 m
- XLR male --> XLR female



Central Rack

InEar
 5 Divices

↑

5 channel

24 channel in / 8 channel out

+

Splitter 1

Splitter 2

Splitter 3

Central Rack

- Flyht Pro L-Rack 12U/10U Profi SF Wheels
 - 10 mm multiplex case
 - Lid to front and roof with 7 butterfly-closures
 - 4 folding-handles
 - backside with lockabel service-lid with 2 butterfly-closures
 - 4x 100 mm rolls (twice braked)
 - (W x H x D) 555 x 940 x 615 mm



6x fuse / power-app.

Power S16

←

1x Schuko EU
230V/16Amp.

- the t.racks Power 16 S
 - DC outputs protected 8x frontside / 8x backside
 - frontside and backside separately secured and switched
 - installation depth 108 mm
 - 19" / 1HE

3x

Splitter

- Behringer ULTRALINK MS8000
 - 8 inputs
 - 16 outputs
 - output ground lift-switch per channel
 - flexible Input SwitchLink-Schalter
 - Phantom power link to link out



InEar

5 Devices



InEar1

UI24

- Aux - Channel 4



InEar5

UI24

- Aux - Channel 8



InEar3

UI24

- Aux - Channel 5



InEar4

UI24

- Aux - Channel 7



InEar1

UI24

- Aux - Channel 5

Beschriftung

- **Raphe:** **Audio-Technica M2T stereo UHF transmitter**
 - 9,5" stereotransmitter, bodypack-reciever
 - frequency: 575 – 608 MHz
 - mono- oder stereo use
 - 2 speakon/XLR-input
 - used with 2 AA-batteries
- **Chris:** **LD Systems MEI 1000 G2**
 - 9,5" stereotransmitter MEI 1000 T, bodypack-reciever MEI 1000 BPR
 - frequency: 823 - 832 MHz also 863 - 865 MHz
 - mono- oder stereo use
 - 2 pawl-XLR combination
 - used with 2 AA-batteries
 - integrierter Limiter +12 dB,
 - headphone 6,3 pawl
- **Dennis:** **Harman's AKG IVM SST-450 IEM**
 - 9,5" stereotransmitter, bodypack-reciever
 - frequency: 500 MHz
 - mono- oder stereo use
 - 2 speakon/2 pawl
 - used with 2 AA-batteries
 - headphone 6,3 pawl
- **Flo:** **Audio-Technica M2T stereo UHF transmitter**
 - 9,5" stereotransmitter, bodypack-reciever
 - frequency: 575 – 608 MHz
 - mono- oder stereo use
 - 2 speakon/XLR-input
 - used with 2 AA-batteries
- **Jenny:** **Audio-Technica M2T stereo UHF transmitter**
 - 9,5" stereotransmitter, bodypack-reciever
 - frequency: 575 – 608 MHz
 - mono- oder stereo use
 - 2 speakon/XLR-input
 - used with 2 AA-batteries

Soundcraft Ui24r

24-Channel mixing console with integrated stage box and DSP

- Parallel multitrack recording to USB drive & DAW
- 20 Mic / Line inputs: 10x XLR, 10x 6.3 mm jack combo
- 2 RCA line inputs
- 2-Channel USB media player (MP3, WAV, AIFF playback)
- 22-Channel USB direct-to-memory recording
- 32-Channel recording interface (I/O via USB-B port)
- Internal sample rate: 48 kHz
- 2 Additional USB ports for controllers & updates
- 2 XLR & jack main outputs
- 8 XLR AUX outputs
- 2 Headphone outputs
- RJ45 Ethernet connector
- HDMI port for mixer control via a monitor
- Integrated dualband WLAN & Ethernet (2 antennas, 2.4 / 5 GHz)
- Compatible with iOS, Android, Windows, Mac OS, Linux (via HTML5)
- Accepts up to 10 devices simultaneously (tablet, smartphone, PC)
- Signal processing from dbx, Lexicon, DigiTech
- 20 High-quality Studer designed mic preamps
- Input channels with 250 ms delay, 4-band parametric EQ, gate, compressor, de-esser, HPF
- 2 Channels include DigiTech amp / guitar modelling
- 8 AUX buses with 31-band graphic EQ, AFS2 Feedback Suppression, and dbx compressor
- 120-Band real-time analyser (inputs and outputs)
- 500 ms (approx. 170 m) of delay on the output busses
- 4 Lexicon effects busses (reverb, delay, chorus, room)
- Format: 19" / 4 U
- Dimensions (L x W x D): 177.8 x 482.6 x 165.1 mm
- Weight: approx. 5.1 kg



Amplifier

Crown XLS 202

The professional XLS power amplifiers is an 2-channel amplifier for high demands in terms of reliability.

- You can easily switch the amplifier from stereo mode to bridge mono operation. They provide additional meaningful LEDs in each channel for input signals above -40 dB (clipping and protection circuit activity).

All power amplifiers in the XLS series are integrated into a solid steel housing with 2 height units. Overheating is prevented by two effective fans.

Features:

- 2x 300 Watt Ohm
- 2 HE, 10,4 kg
- 2-channel-bridge switch mono
- 3 LED's per channel
- 2 fan
- 2 level controls
- 2x XLR-input
- 2x speakon-outputs also pawl combination



CONTACT



Any questions? Feel free to contact:

Technical Team / Support

- Dennis Weber (dennis.weber91@gmx.de)
- Christian Lehr (dr.chrische@gmail.com)

Fireborn _{GbR}, Friedrich-Ebert-Straße 2, 79540 Lörrach (Germany)

Phone : +49 173 6493 520
E-Mail: contact@fireborn-official.com
Web: <https://www.fireborn-official.com/>



Monitorbox

- 2x FAME SM 150 150 A III

alternative integration
only brought upon request



Fame SM-150 MKIII aktiv monitors 12"

- 12"/1" 2.1
- rated Power RMS: 200 Watt / 4 Ohm
- program Power: 400 Watt
- impedance: 8 Ohm
- SPL: 97 dB Max. SPL: 121 dB
- frequency: 55 Hz - 18 kHz
- angle: 60° x 40°
- Tape/CD-Input (Chinch)
- Aux-in – 6,3 pawl
- Combi Mic. Input
- XLR/ 6,3 pawl (mic-volume-control & equalizer)



Labeling
Monitor UI24
 • Aux – channel 1-3

3x Monitor



Three separate monitor paths
from the stage rack
can be tapped and mixed